



Farming and Energy Use Series
Agriculture Energy Efficiency Rebates



The DEP Agriculture Energy Efficiency Rebate program can help defray the costs of LED lighting, ventilation equipment, or dairy equipment upgrades for your farm.

Who Can Apply for an Agriculture Energy Efficiency Rebate?

Applicants must meet the definition of a normal farming operation under Pennsylvania's Right to Farm Law: production of agricultural crops and commodities that takes place on not less than 10 contiguous acres in area or on less than 10 contiguous acres in area but with an anticipated yearly gross income of at least \$10,000.



Rebate Amounts

Technology Category	Eligible Replacement Equipment	Maximum Rebate Amount Per Applicant
Energy Efficient Lighting	<ul style="list-style-type: none"> LED lighting fixtures LED bulbs (DLC or Energy Star listed) Lighting controls (e.g. occupancy sensors) 	Up to 50% of total lighting equipment purchase and installation cost \$7,500 max.
Energy Efficient Ventilation Systems	<ul style="list-style-type: none"> High Efficiency ventilation fan (both circulation and exhaust fans). Select fans with a high efficiency (cfm/Watt) rating as outlined under the program guidelines. High Efficiency motors Controls (e.g. Variable Frequency Drives) 	Up to 50% of total ventilation equipment purchase and installation cost \$7,500 max.
Energy Efficient Dairy Equipment	<ul style="list-style-type: none"> Variable speed vacuum pumps High Efficiency motors Controls (e.g. Variable Frequency Drives) Scroll compressors for refrigeration to replace existing reciprocating compressors Well water pre-chillers including plate coolers/heat exchangers Refrigeration Heat Recovery (RHR) units where recovered heat is used to preheat water 	Up to 50% of total dairy equipment purchase and installation cost. \$7,500 max.

Want more information?

Contact:

Michelle Ferguson
 DEP Energy Programs Office
 (570) 327-3783
 Email: RA-EPAgEnergyProgram@pa.gov



pennsylvania
 DEPARTMENT OF ENVIRONMENTAL PROTECTION

You may apply for a rebate in more than one technology category, for a total rebate funding not exceeding \$7,500.

Installation costs up to \$500 for qualified contractors/vendors may be included in the total project cost for each technology category.

How to get an Ag Energy Efficiency Rebate

For complete program guidelines, eligibility requirements, and application instructions, and a link to the online application: www.dep.pa.gov/agricultureenergy

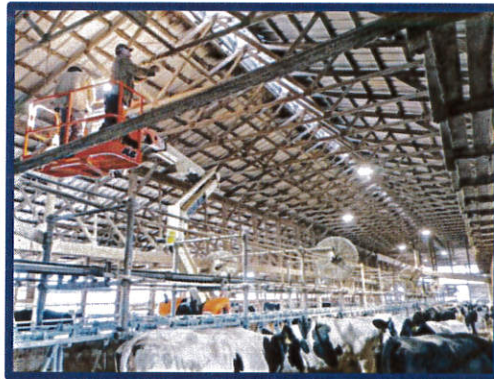
1. Get your project approval in advance by submitting an online application to DEP. *Make sure your application is complete.*
2. If your application is complete and meets eligibility criteria, you'll get an email within two weeks that will contain your rebate voucher and instructions on how to redeem it.
3. Install your energy efficiency upgrade.
4. Once your upgrade project is completed, redeem your voucher by emailing invoices, proof of payment, and project photos to DEP.
5. You'll get the rebate money in 4 - 6 weeks.
6. Enjoy your energy savings!

Funding Availability

Vouchers are awarded on a first-come, first-served basis. Applications are being received until December 31, 2023.

DEP has approximately \$150,000 available for this program through the State Energy Program of the U.S. Department of Energy.

*Rebate-funded lighting upgrade,
Central Manor Dairy, Lancaster County*



Did You Know?

- LED bulbs not only last longer, but can use 50-75% less energy than older incandescent and fluorescent lights.
- Scroll compressors are 15-20% more energy efficient than a traditional reciprocation compressor.
- Poultry farms are the most energy intense agricultural sector in Pennsylvania, followed by dairy farms (from the report *Energy Use, Energy Savings, and Energy Efficiency Policy Recommendations for Pennsylvania Agriculture*).

Example of a rebate-funded LED lighting upgrade for indoor agriculture.

*River City Growers in
Allegheny County*

