

ORDINANCE NO. 2019 - 04

**AN ORDINANCE RESTRICTING ON-STREET PARKING ON BALTIMORE PIKE
(S.R. 97) AT ITS INTERSECTION WITH BOWERS ROAD (T-428)**

WHEREAS, Baltimore Pike, SR 97, is a state road within Mount Joy Township;

WHEREAS, Bowers Road, T-428, a Township road, intersects with the Baltimore Pike;

WHEREAS, on street parking along Baltimore Pike at the intersection with Bowers Road is presently unrestricted; and

WHEREAS, the Township received complaints that on-street parking on the Baltimore Pike interfered with the view of drivers seeking to safely enter Baltimore Pike from Bowers Road; and

WHEREAS, Section 6109(a)(1) of Pennsylvania Title 75 Vehicles permits a municipality to restrict on-street parking on a state road following engineering study of conditions warranting such restriction;

WHEREAS, the Board of Supervisors engaged the engineering firm of William F. Hill (Engineer) to prepare the required study; and

WHEREAS, Engineer prepared a study of the conditions at the intersection of Baltimore Pike and Bowers Road (Study); and

WHEREAS, the Study established minimum safe stopping distances and determined the need for on-street parking restrictions on Baltimore Pike at its intersection with Bowers Road; and

WHEREAS, the Board of Supervisors believes that restriction of on-street parking on Baltimore Pike at its intersection with Bowers Road is supported by the Study and in the public

health, safety and welfare.

NOW, THEREFORE, BE IT ENACTED AND ORDAINED by the Board of Supervisors of Mount Joy Township:

Section 1. Purpose

The purpose of this Ordinance is to restrict on-street parking on the Baltimore Pike at its intersection with Bowers Road.

Section 2. Enabling Authority

This Ordinance is enacted pursuant to the enabling authority of Section 67328 of the Second Class Township Code and Section 6109(a)(1) of Pennsylvania Title 75 Vehicles.

Section 3. On-Street Parking Restriction on Baltimore Pike

On-street parking on the Baltimore Pike at its intersection with Bowers Road shall be restricted as described below and shown on the attached aerial site plan, attached and marked as **APPENDIX A**, and depicted on the road plan, attached and marked as **APPENDIX B**.

- i. North of intersection - 140 feet from the centerline of Bowers Road
- ii. South of intersection -- 241 feet from the centerline of Bowers Road

Section 4. Enforcement; Penalties

The on-street parking restrictions established by this Ordinance are enforced and subject to penalties as provided in the Vehicle Code.

Section 5. Repealer

All other ordinances of Mt. Joy Township that conflict with this Ordinance are hereby repealed. All other ordinances of the Township not specifically amended or repealed hereby shall remain in full force and effect.

Section 6. Severability.

In the event that a court of competent jurisdiction declares any section, provision, clause or term of this Ordinance invalid, such decision shall not affect the validity of any of the remaining portions of the Ordinance.

Section 7e. Effective Date

This Ordinance shall become effective within five calendar days after the date of enactment of this Ordinance.

ENACTED this 21st day of November, 2019


ATTEST:



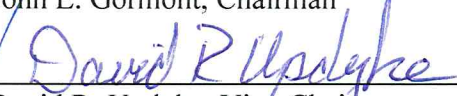
Sheri Moyer, Secretary

SEAL

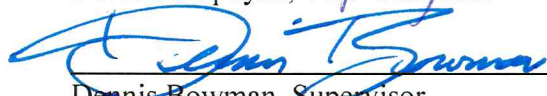
MOUNT JOY TOWNSHIP
ADAMS COUNTY, PENNSYLVANIA



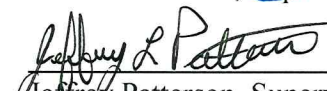
John E. Gormont, Chairman



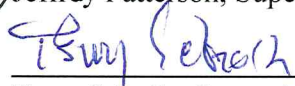
David R. Updyke, Vice-Chairman



Dennis Bowman, Supervisor

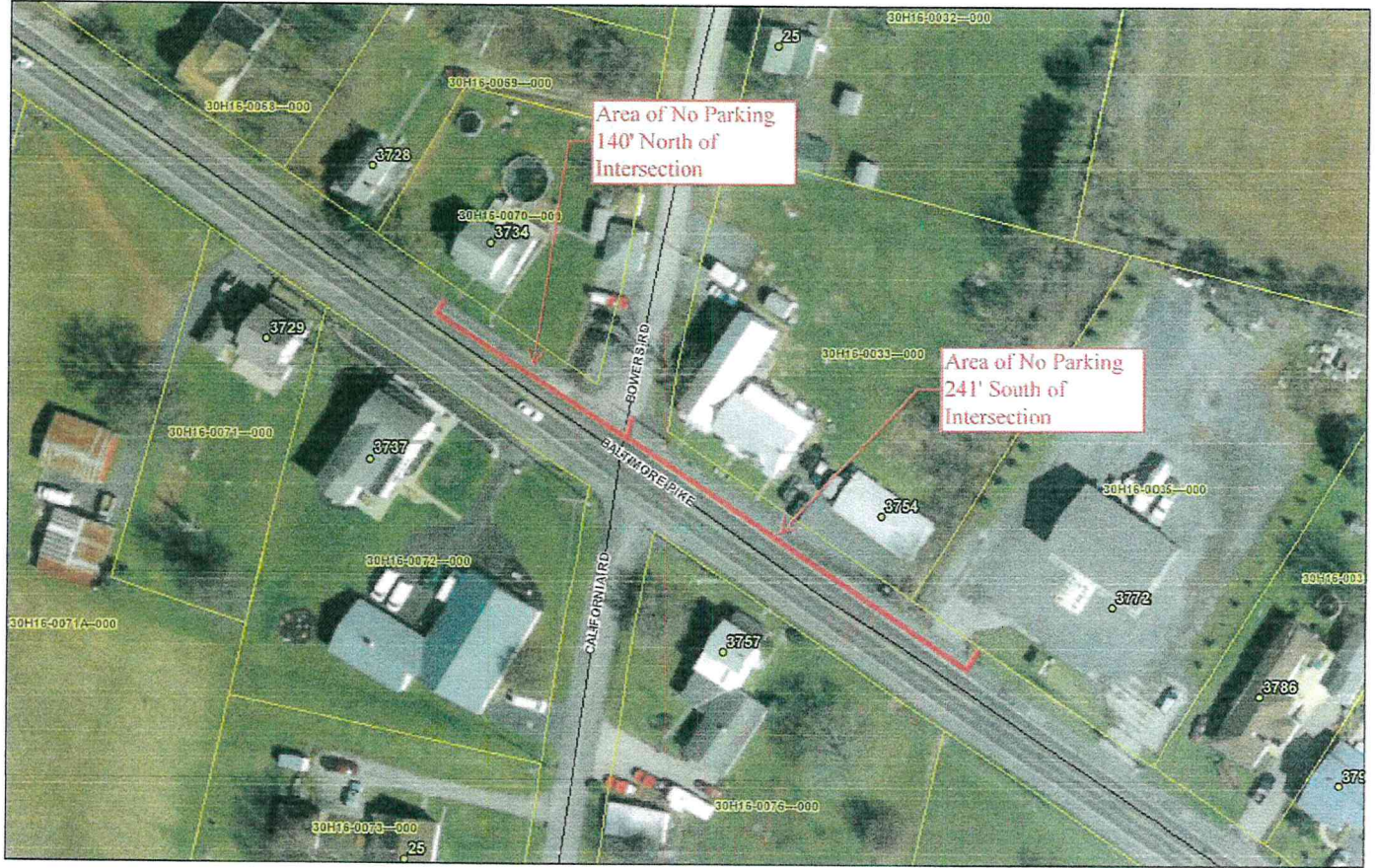


Jeffrey Patterson, Supervisor



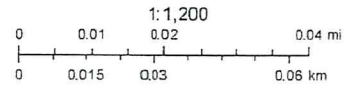
Terry Scholle, Supervisor

Baltimore Pike Parking Restriction



10/17/2019, 11:17:22 AM

- Address Points
- ▭ Municipal Boundary
- ▭ Parcel Boundary
- Street Centerline

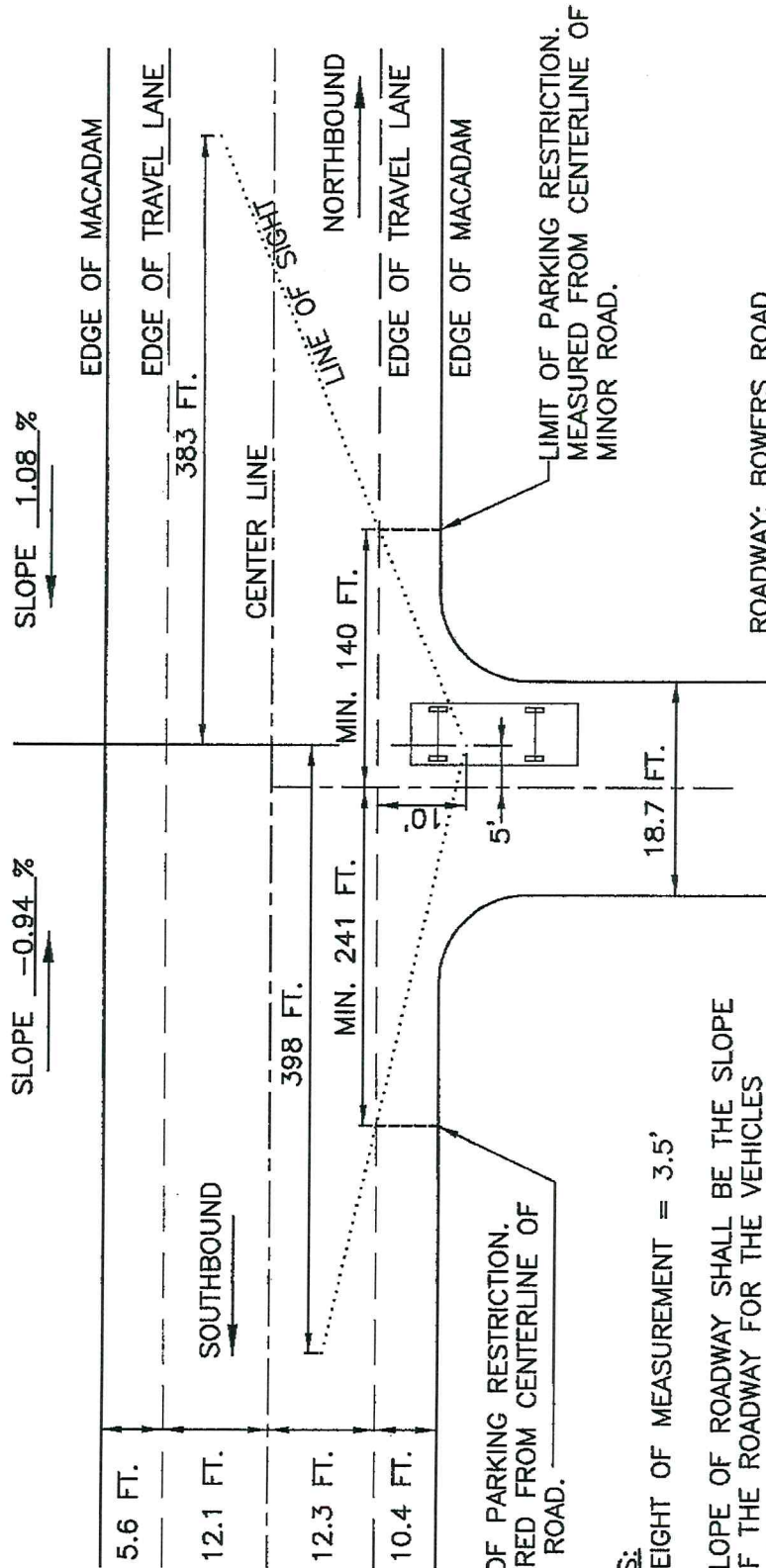


Sources: Esri, HERE, Garmin, Intermap, increment P Corp., GEBCO, USGS, FAO, NPS, NRCAN, GeoBase, IGN, Kadaster NL, Ordnance Survey, Esri

Web AppBuilder for ArcGIS
 Esri, HERE, Garmin, INCREMENT P, USGS, EPA, USDA | PADCNR, GNMP | Adams County Office of Planning & Development (ACOPD) - GIS Division | ACOPD |

PARKING RESTRICTION

ROADWAY: BALTIMORE PIKE / BOWERS ROAD
 SPEED LIMIT: 45 MPH



ROADWAY: BOWERS ROAD

LIMIT OF PARKING RESTRICTION, MEASURED FROM CENTERLINE OF MINOR ROAD.

LIMIT OF PARKING RESTRICTION, MEASURED FROM CENTERLINE OF MINOR ROAD.

NOTES:

1. HEIGHT OF MEASUREMENT = 3.5'
2. SLOPE OF ROADWAY SHALL BE THE SLOPE OF THE ROADWAY FOR THE VEHICLES APPROACHING FROM THE LEFT AND THE RIGHT. A POSITIVE SLOPE INDICATES AN APPROACHING VEHICLE TRAVELING UP HILL.

WM. F. HILL & ASSOC., INC.
 PROFESSIONAL ENGINEERS
 CIVIL & MUNICIPAL ENVIRONMENTAL
 GETTYSBURG, PA 17325
 PH. (717) 384-9137

PLAN PREPARATION	
DESIGNED BY: EHV	CHECKED BY: EHV
DRAWN BY: JAG	DATE: 10/17/19

NO.	DATE	REVISIONS
		DESIGNED

EXHIBIT A - PARKING RESTRICTION
 BALTIMORE PIKE / BOWERS ROAD
 MOUNT JOY TOWNSHIP
 LITTLESTOWN, ADAMS COUNTY, PA

SCALE AS BROWN
SHEET NO. 1 OF 1