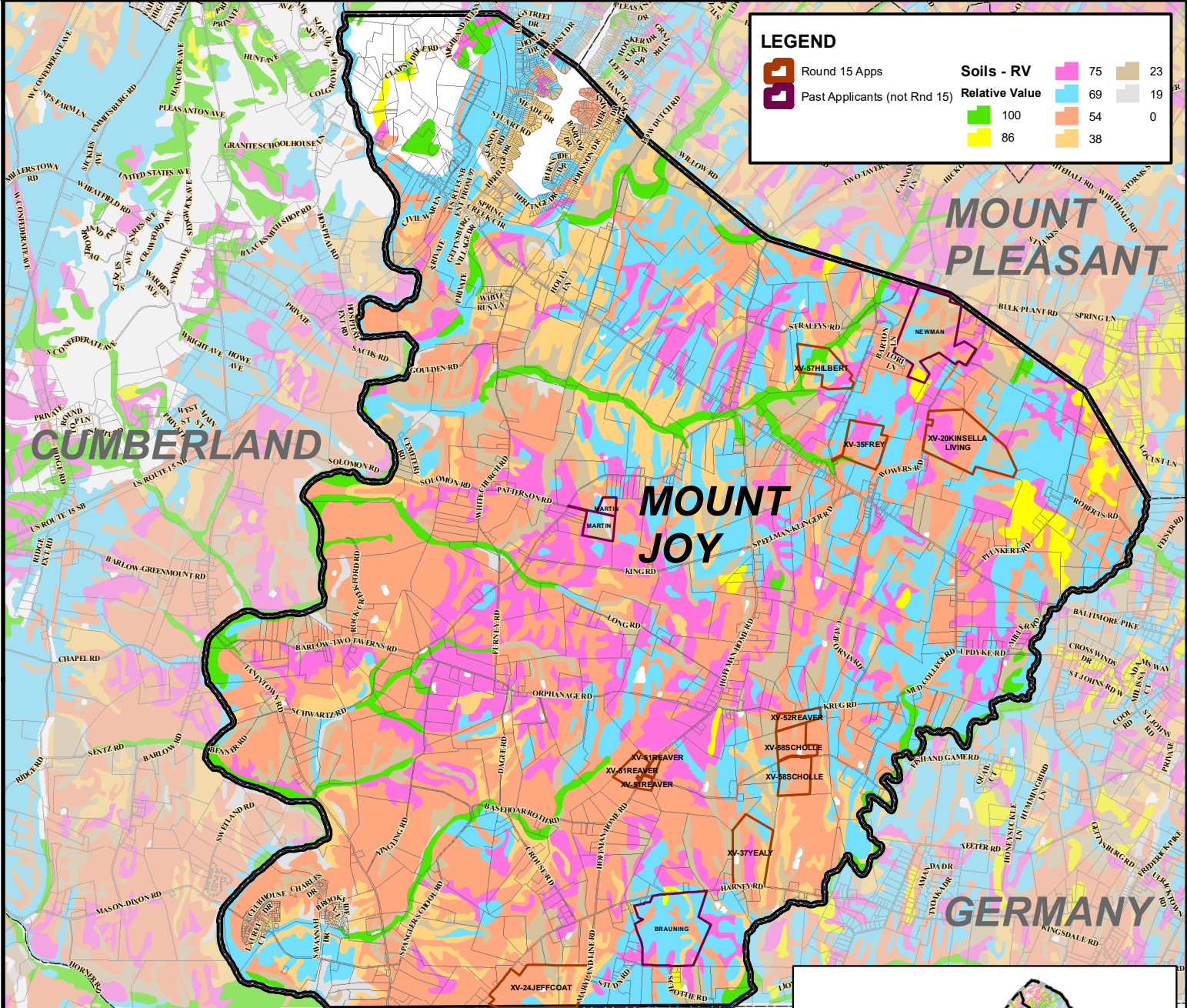
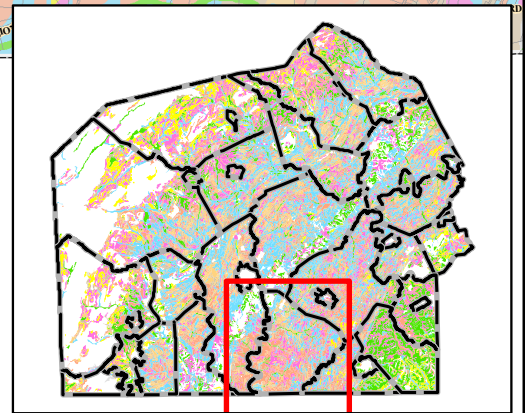


MOUNT JOY TOWNSHIP RV SOILS



Each soil-mapping unit found in Adams County has been assigned a Relative Value. These relative values were developed by USDA-NRCS using information contained in the State Soil Survey Geographic Database. The relative values developed by USDA-NRCS for each soil mapping unit reflect the agricultural value of each soil mapping unit relative to other soil mapping units in the County. These values are specific to the County and should not be used in other counties. Factors considered in developing the Land Evaluation include average crop yields, land capability class and subclass (limitations such as erosion hazard, wetness, stones), Important Farmland classification and acreage (extent) of soil mapping units in the County.

Based on these factors, each soil has been assigned a relative value, with 100 being the highest. All the other soils in the County have been assigned relative values less than 100.



Data Source:
ACOPD - GIS Division

Prepared By:
ACOPD - Rural Resource Division | 10.18.2022 MAC

This map is for illustration purposes only. Adams County Office of Planning & Development does not assume any responsibility for the information presented on this map.

MOUNT JOY TOWNSHIP ADAMS COUNTY, PA

