

Mount Joy Township Zoning Map

Adams County, PA

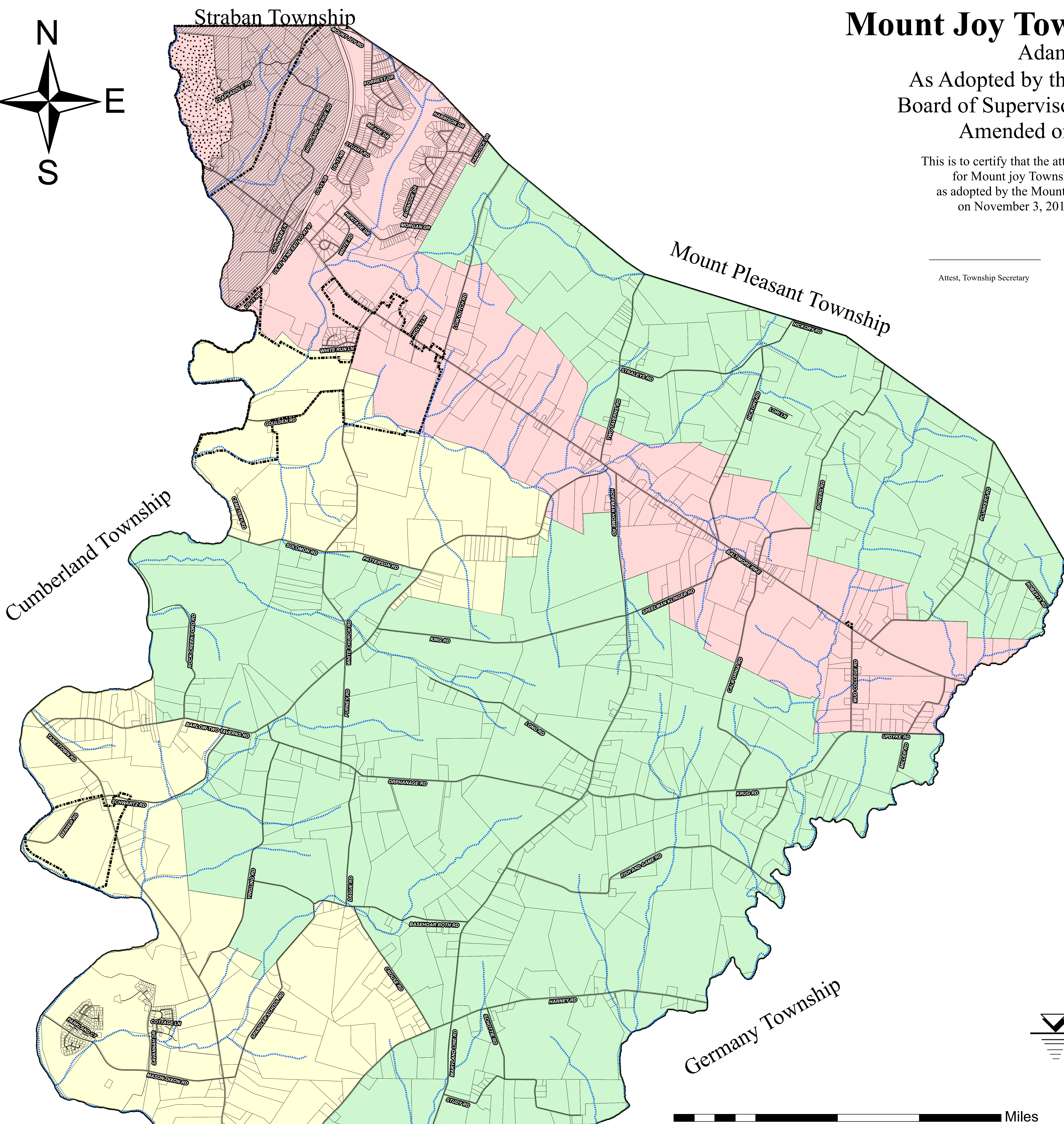
As Adopted by the Mount Joy Township Board of Supervisors on November 3, 2017

Amended on March 21, 2019

This is to certify that the attached copy is the Official Zoning Map for Mount Joy Township, Adams County, Pennsylvania as adopted by the Mount Joy Township Board of Supervisors on November 3, 2017. Amended on March 21, 2019

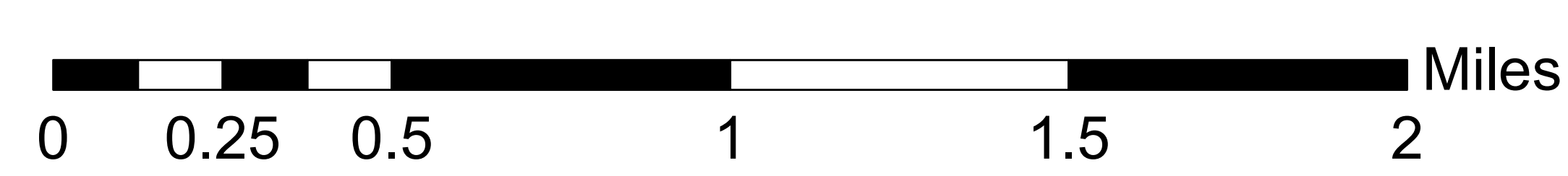
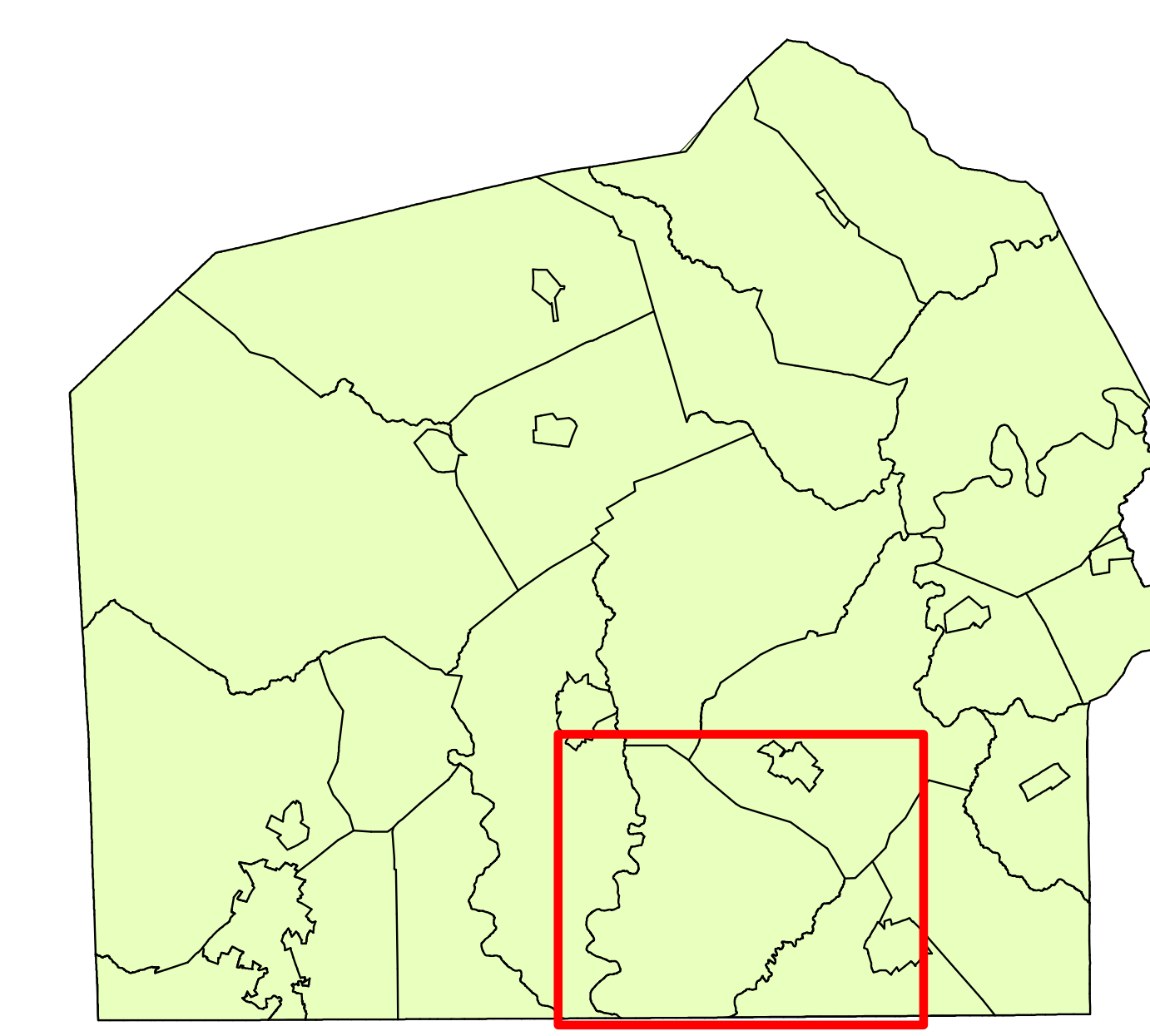
Attest, Township Secretary

Chairman, Board of Supervisors



Legend

- Roads
- Streams/ Watercourses
- Historic Districts
- Parcels
- National Military Park
- Zoning Districts**
- Agricultural District
- Baltimore Pike Corridor- Intensive Uses Overlay
- Baltimore Pike Corridor
- Open Countryside District



WM. F. HILL & ASSOC., INC.
 PROFESSIONAL ENGINEERS
 CIVIL ♦ MUNICIPAL ♦ ENVIRONMENTAL

Base map created by Adams County GIS Mapping Office
Map updated by William F. Hill And Associates. June 5, 2017